

# Corning® X-LAB® System

CORNING



Current cell isolation methods can be labor intensive, highly variable, and lead to poor yields and/or viability. Many of these methods require the usage of chemicals, filters, or other reagents to enable the isolation and harvest of the cells of interest.

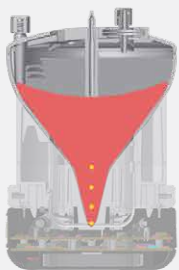
The Corning X-LAB System is designed to separate and harvest a programmable volume of target cell populations from blood and blood products in a closed, sterile device. Customizable process programming, automated separation of samples into three chambers, and highly sensitive infrared sensors for cell separation ensure consistent, reliable, efficient, high-recovery results.

Processing data can be transferred to X-SERIES® DataTrak software to further support GMP processing, monitoring and reporting of information.

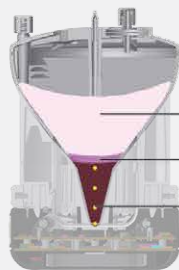
The Corning X-LAB System is a flexible solution for efficient, reliable, and reproducible Ficoll-free recovery of target cell populations from blood and blood products.

- ▶ Automated, functionally closed, sterile system
- ▶ Average processing time of 35 minutes\*  
\*Depending on source material
- ▶ Ficoll-free sedimentation-based harvest
- ▶ Barcode tracking of supplies and process steps electronically
- ▶ Consistent, high recovery (>90%) of viable cells
- ▶ Precise selection of target cells
- ▶ Customized protocols
- ▶ Single-use, disposable cartridge
- ▶ Process 40 mL to 240 mL
- ▶ US class I medical devices
- ▶ Programmable harvest volume of 3 mL to 40 mL

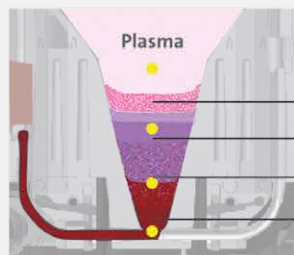
## How it Works



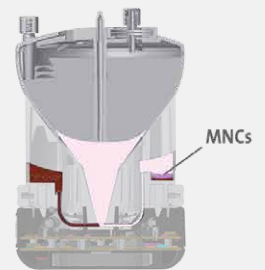
Cartridge with blood in central chamber



Centrifugation separates cell types by density



Red blood cells are transferred to the depletion chamber



Target cells are isolated in the sterile harvest chamber



35-MINUTE PROCESSING TIME





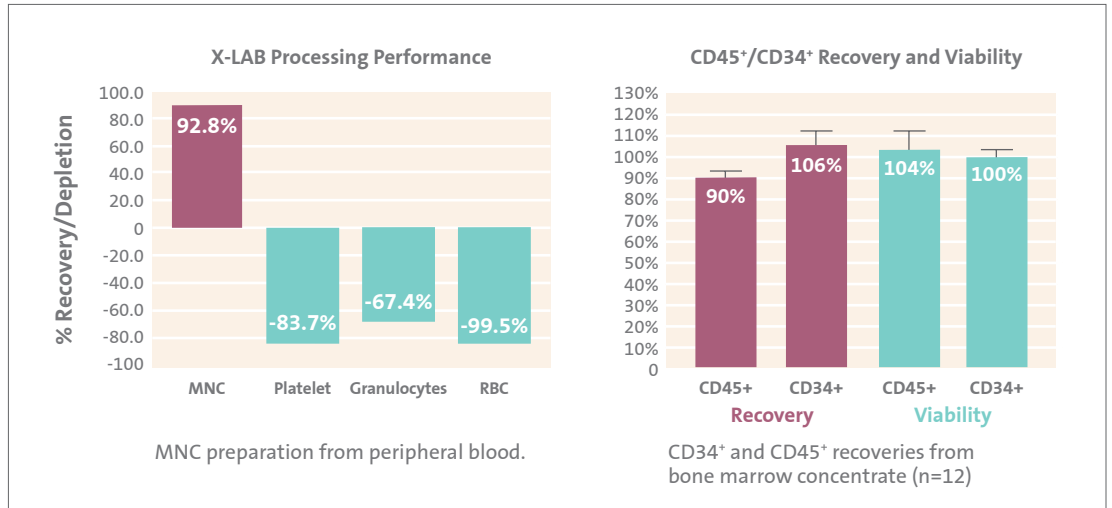
Corning X-LAB control module



Corning X-LAB docking station



Corning X-Counterweights and Corning X-Balance ring kit



### Ordering Information

Cat. No.	Description	Qty/Cs
6917	Corning® X-LAB® control module	1
6918	Corning X-LAB docking station	1
6930	X-SERIES® DataTrak software	1
6920	Corning X-Counterweight High	1
6921	Corning X-Counterweight Medium	1
6922	Corning X-Counterweight Low	1
6923	Corning X-Balance ring kit	1
6924	Corning X-LAB disposable cartridges	2
6925	Corning X-LAB disposable cartridges	12
6926	Corning X-LAB disposable cartridges	36

For more specific information on claims, visit the Certificates page at [www.corning.com/lifesciences](http://www.corning.com/lifesciences).

**Warranty/Disclaimer:** Unless otherwise specified, these products are US class I medical devices and medical device accessories, as general purpose laboratory equipment labeled or promoted for a specific medical use. Corning does not make or support any further claim for these products nor does it conduct any further testing to support any other intended use for the product indicated above. Should you decide that you want to use the product for any intended use other than that made by Corning then you accept that Corning does not make or support that claim and that you as the user are responsible for any testing, validation, and/or regulatory submissions that may be required to support the safety and efficacy of your intended application.

For additional product or technical information, visit [www.corning.com/lifesciences](http://www.corning.com/lifesciences) or call 800.492.1110. Outside the United States, call +1.978.442.2200 or contact your local Corning sales office.

# CORNING

## Corning Incorporated Life Sciences

836 North St.  
Building 300, Suite 3401  
Tewksbury, MA 01876  
t 800.492.1110  
t 978.442.2200  
f 978.442.2476

[www.corning.com/lifesciences](http://www.corning.com/lifesciences)

**ASIA/PACIFIC**  
Australia/New Zealand  
t 61 427286832

Chinese Mainland  
t 86 21 3338 4338  
f 86 21 3338 4300

India  
t 91 124 4604000  
f 91 124 4604099

Japan  
t 81 3-3586 1996  
f 81 3-3586 1291

Korea  
t 82 2-796-9500  
f 82 2-796-9300

Singapore  
t 65 6572-9740  
f 65 6735-2913

Taiwan  
t 886 2-2716-0338  
f 886 2-2516-7500

**EUROPE**  
CSEurope@corning.com

France  
t 0800 916 882  
f 0800 918 636

Germany  
t 0800 101 1153  
f 0800 101 2427

The Netherlands  
t 020 655 79 28  
f 020 659 76 73

United Kingdom  
t 0800 376 8660  
f 0800 279 1117

**All Other European Countries**  
t +31 (0) 206 59 60 51  
f +31 (0) 206 59 76 73

**LATIN AMERICA**  
grupoLA@corning.com

Brazil  
t 55 (11) 3089-7400

Mexico  
t (52-81) 8158-8400